



Reyee Product Guide

Redefine your easy network



CONTENTS

01 About Ruijie

02 About Reyee

03 Cloud Service
Ruijie Cloud

04 Wireless
Cloud-managed Access Points
Cloud-managed Wireless Bridge


05 Switches
L2+/L2 10G Uplink Managed Switches
L2 10G Uplink Managed Switches
L2 Gigabit Managed Switches
Cloud Managed Switches
Unmanaged Switches



06 Router
EasyGate Series

01 About Ruijie

Who is Ruijie?

Ruijie Networks is an innovative ICT enterprise brand. It has self-developed 8 product lines, including switches, routers, wireless, cloud class, security, gateways, IT management and authentication & accounting. Ruijie has 6 R&D centers, 59 branch offices and over 10,000 channel partners with service covering over 50+ countries and regions in various industries like government, telecommunications, finance, education, healthcare, Internet, energy, transportation, commerce, manufacturing, etc. Since founded in 2000, Ruijie has been building in-depth scenario-oriented application experience through product and solution innovation, thus assisting the upgrade into the digitalization of all industries.

 | 6 R&D Centers
  | 59 Branch Offices
  | 5,000+ Employees

 | 250K+ Channel Partners
  | 50+ Countries Coverage

- Ruijie Networks Recognized in **Gartner** Magic Quadrant for Wired and Wireless LAN Access Infrastructure
Source: Gartner 2019
- **Top 3** China enterprise-class networking vendors
Source: IDC, March 2020
- **Top 2** market share in China Enterprise WLAN market, **TOP 1** market share in Wi-Fi 6 market
Source: IDC, December 2019
- **Rank 1st** in China VDI terminal market
Source: IDC, March 2020
- **Rank 1st** in IT infrastructure operation and maintenance software market
Source: IDC, March 2020

02 About Reyee

Redefined your easy network

Who is Reyee?

Reyee is the SMB sub-brand launched by Ruijie in 2014, including 4 major product lines: switch,router, wireless, and home products. The purpose of the brand is to simplify the network and make it easier for small system integrators/ installers to do business. The Ruijie Cloud for Reyee products provides full lifecycle services to the contractors. For the pre-sales process, it can be used for solution design, viewing detailed success cases and product specifications. During the deployment process, the self-organizing network technology saves a lot of deployment time, and the automatic configuration and deployment also solve the problem of insufficient technical capabilities of the installers. For the post-sales process, it offers remote operation and maintenance, smart alarm and one-click network monitoring. By meeting the business needs of the installers, Ruijie Cloud makes it easier for them to boost their businesses.

Reyee in China

50%

CAGR for 7 consecutive years


2,00K+

Installers are using Reyee products

3,000+

New projects added on Ruijie cloud every day

Product Family

Cloud Services					
Ruijie Cloud for Reyee 		Self-organizing Network Real Topology Delivery Report		Mobile Provisioning Mobile Monitoring & Alarm Mobile maintenance Remotely	
Switches	Unmanaged Switch  RG-ES05/08G	Cloud Managed Switch  RG-ES200 Series	L2 Smart Gigabit Switch  RG-NBS3100 Series	L2+ Smart Gigabit Switch  RG-NBS5100 Series	
	 RG-ES100 Series		 RG-NBS3200 Series	 RG-NBS5200 Series	
Access Point	Indoor AP  RG-RAP2200 Series	Wall AP  RG-RAP1200 Series	Outdoor AP  RG-EAP602	Outdoor Bridge  RG-EST310	 RG-EST350
Router	RG-EG Series  RG-EG105G		RG-EG PoE Series  RG-EG105G-P		
	 RG-EG105GW		 RG-EG210G-P		
Home Wi-Fi	 RG-EW1200G-Pro		 EG-EW1200		

03 Cloud Service

Cloud make your business easy

Ruijie Cloud service

Overview: Cloud make your business easy

Ruijie Cloud service is the unique whole life-time cloud solution in the world for small and medium-sized businesses and provide from pre-sales to maintenance cloud service.

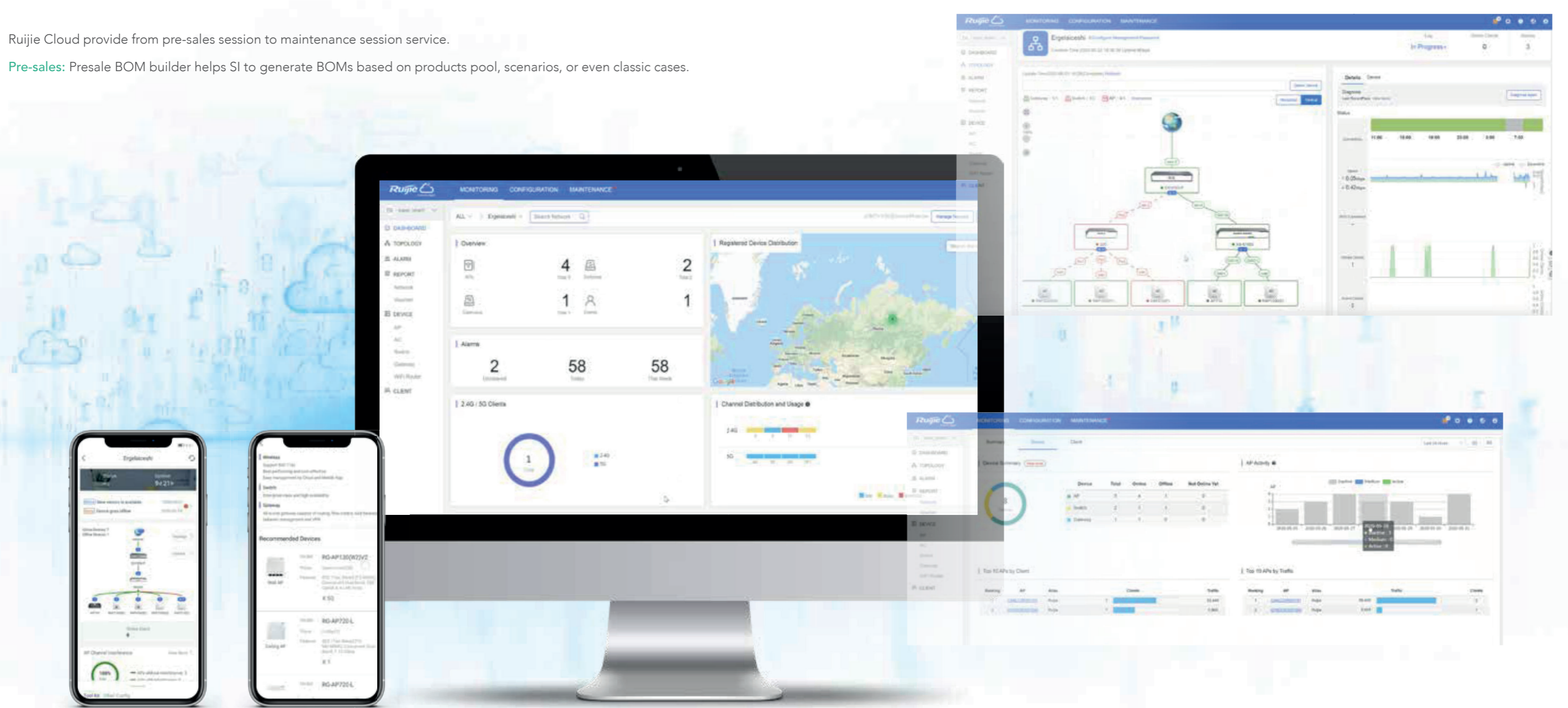
Ruijie Cloud provide from pre-sales session to maintenance session service.

Pre-sales: Presale BOM builder helps SI to generate BOMs based on products pool, scenarios, or even classic cases.

Deployment: Auto Provisioning via Self-organizing Network. Smart configuration through only several steps in mobile phone, say goodbye to heavy PC and complicated CLI.

Maintenance: Monitoring Devices status anytime and anywhere. One click optimization, trouble diagnosis, real topology, alerts notification remotely, etc.

Help the installers provide better service to their customer and grow business.





• 200K+ Users on Ruijie Cloud



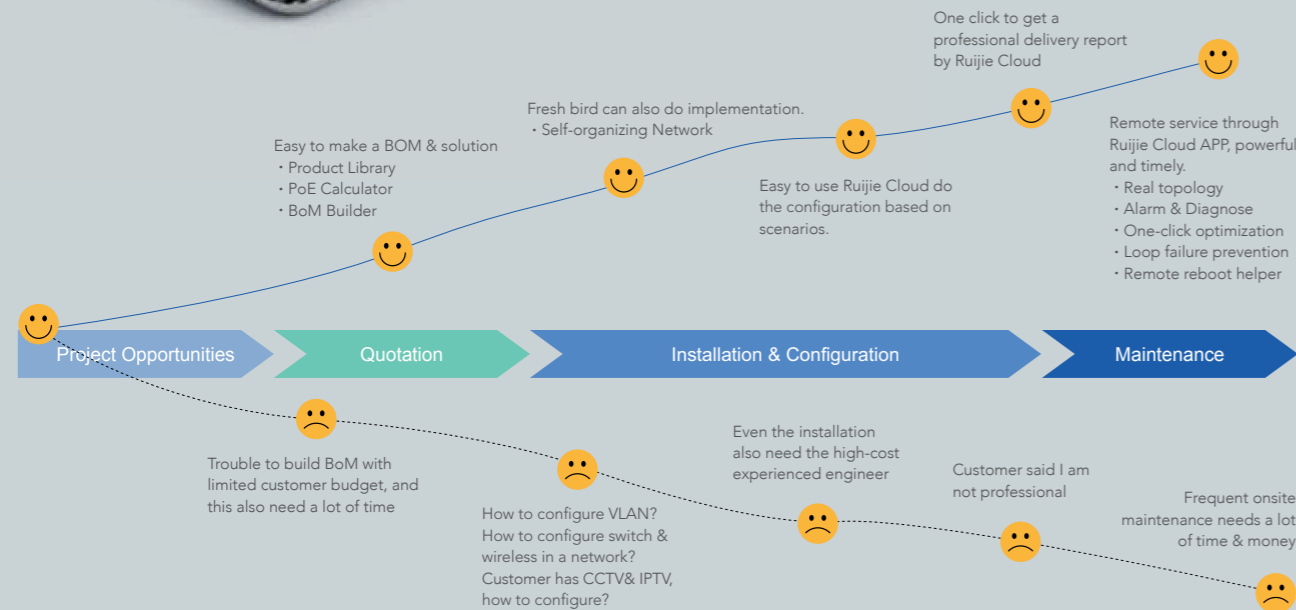
• 70270 BoMs be built on Ruijie Cloud



• 340912 projects used self-organizing network
• 2.5 mins for average



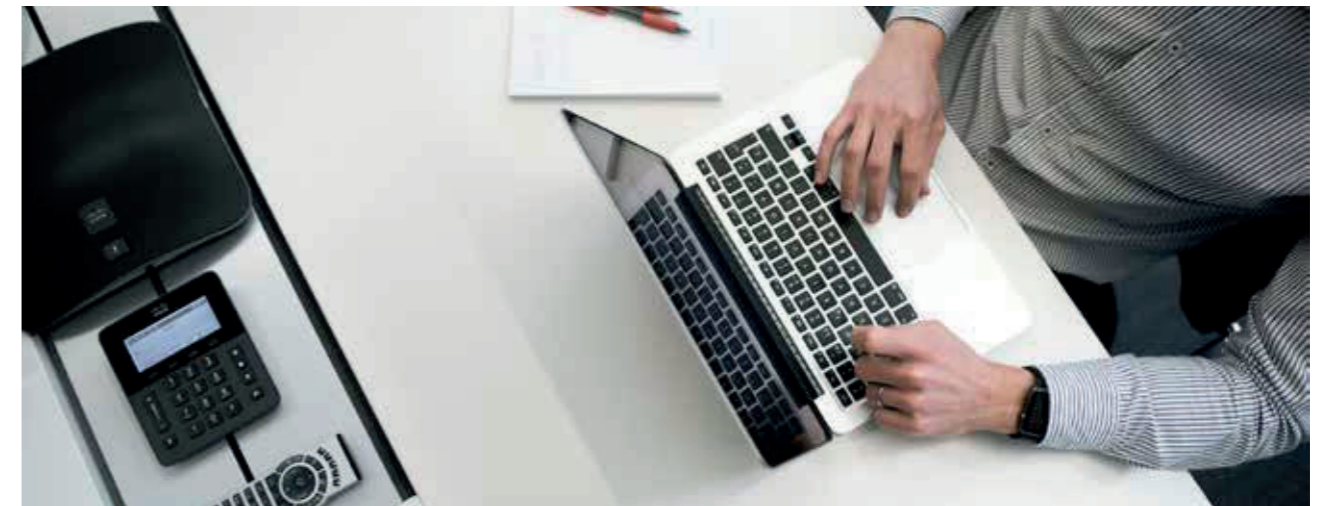
• 130117 troubles hooting



Specifications

Overview	
Number of APs Supported	Virtually unlimited
Clients	Virtually unlimited
Authentication Support	PSK, One-click, open
Guest Portal	Yes
Management Platform	Web / Mobile APP
AP Discovery and Control	L3 via CWMP
Data Forwarding	Local Breakout
Management	
Unified Management & Monitoring	Unified Management for APs, Switches and Routers
	Dashboard with Google Maps integration
	Multi-tenant architecture
	Sub-account group management
	Multi-level groups supported to manage devices
	Network overall running status monitoring, including traffic trend, clients number, Top APs, Clients and SSIDs
Wireless Management	SSID and mapping VLAN management
	WEB and telnet security configuration
	AP load balancing and roaming setting
Switch Management	RPM auto RF planning
	Switch ports status monitoring, including RX/TX speed and packet each port
Router Management	Switch CPU, Memory, temperature, flash usage and PoE power usage monitoring
	VLAN management for each port
	Syslog, SNMP, NTP, DNS, loop prevention
	Router online users, sessions monitoring
Mobility Management (Mobile App)	Router CPU, Memory and flash usage monitoring
	Configuration backup and restore
	Remote access local EWEB configuration
	Logical Network Topology Management
	Scan to register APs to the Ruijie Cloud
	Push notifications for alarms
	Monitor status of total network, AP and clients
	AP device and Switch PoE port reboot
	Create and configure new SSIDs
	RPM wireless network auto optimization
Upgrade device to latest firmware	
Speed test and signal & security checking	
IOS and Android App	
Onsite and cloud mode for management	
Delivery report generation	
Real topology monitoring	
Support	
Zero-touch Provisioning	SON (Self-Organizing Network), auto discovery and auto networking
Flexible report options	Traffic per AP, per network group
	Top 10 Traffic by APs, network groups and SSIDs
	Mobile Phone brand distribution
	User experience trend data (tracking on 2.4 and 5G)
	Unique client reports
Troubleshooting	One-click to generate delivery report.
	Remotely reboot devices, web-CLI advanced diagnostic
	Get notifications of network status via email
	Event logs are sorted by network device
	Alarms are generated for device status
	View historical client data to troubleshoot issues that happened in the past
One-click network diagnose : each link diagnose from client to AP, Switch, Router and Internet	
Technical Support	Easy button access to support
	7*24 technical support (RITA)

04 Wireless



Cloud-managed Access Points

Reyee cloud-managed access points is a high performance for indoor/outdoor/wall scenarios. Compliant with 802.11ac wave2 Wi-Fi protocol, cloud-managed series access points supports MU-MIMO dual stream technology.

The industrial product design makes the product is simple to install and maintenance.

Cloud-managed access points support self-organizing network.

■ Provide better performance based on Dual-band Wi-Fi

Supports 2.4GHz and 5GHz dual-band communication, providing access rate of 400Mbps at 2.4GHz, 867Mbps at 5GHz and up to 1267Mbps per AP. It can provide 5GHz frequency band with less interference, wider channel, and faster speed for the terminals, allowing the users to enjoy excellent wireless experience.

■ Seamless Layer 3 Roaming

The device supports Layer 3 roaming for the complex Layer 3 network. When users move across the Layer 3 networks, seamless roaming can be achieved without service interruption.

■ Support Self-organizing networking feature

Self-organizing networking feature, which breaks through the product limitations and realizes auto-discovery, auto-networking and auto-configuration between routers, switches, and wireless APs without the need for controllers or Internet access. With the mobile app, users can quickly complete the device deployment and configuration, remote management, operation and maintenance of the entire network, which greatly reduces the investment of equipment cost, labor cost and time cost in the process of wireless network construction.

■ Lifetime free cloud management

Users can perform comprehensive local management or remote management of the equipment in the entire network via the mobile app, equipment EWEB management, Ruijie Cloud platform, etc. Users can also share the network to third party for network hosting and collaborative management, thereby achieving simpler, easier to use, more secure and convenient enterprise network operation and maintenance.

Products



RG-RAP2200(E)

AC1300 Dual-band Gigabit ceiling mount Access Point



RG-RAP2200(F)

AC1300 Dual Band Ceiling Mount Access Point



RG-RAP1200(F)

AC1300 Dual Band Wall-plate Access Point



RG-EAP602

AC1200 Dual Band Gigabit Outdoor Access Point

Specifications

Product picture				
Mode	RG-RAP2200(E)	RG-RAP2200(F)	RG-RAP1200(F)	RG-EAP602
Product description	AC1300 Dual Band Ceiling Mount Access Point	AC1300 Dual Band Ceiling Mount Access Point	AC1300 Dual Band Wall-plate Access Point	AC1200 Dual Band Gigabit outdoorAccess Point
Hardware Features				
Radio	Dual-stream dual-band			
Protocol	IEEE 802.11a/b/g/n/ac			
Operating Bands	802.11b/g/n : 2.4G ~ 2.4835GHz 802.11a/n/ac : 5G: 5.150 ~ 5.350GHz, 5.725 ~ 5.850GHz			
Antenna	Array antennas (2.4G: 2dBi, 5G: 2dBi)	PCB antennas	Built-in omnidirectional antennas (basic gain 3dBi)	
Spatial Streams	2.4G 2x2MIMO 5G 2x2MIMO			
Max Throughput	Up to 400Mbps (2.4G) Up to 867Mbps (5G)			Up to 300Mbps (2.4G) Up to 867Mbps (5G)
Modulation	OFDM	OFDM: BPSK@6/9Mbps, QPSK@12/18Mbps, 16-QAM@24Mbps, 64-QAM@48/54Mbps		
	DSSS	DSSS: DBPSK@1Mbps, DQPSK@2Mbps, and CCK@5.5/11Mbps		
	MIMO-OFDM	MIMO-OFDM: BPSK, QPSK, 16QAM, 64QAM and 256QAM		

Dimensions	194mm×194mm×35mm (excluding mounting kits)	194mm×194mm×35mm (excluding mounting kits)	86mm*85mm*32mm	200mm*220mm*166mm (excluding mounting kits)	
Weight	0.45kg (excluding mounting kits)	0.45kg (excluding mounting kits)	0.25Kg	1kg (excluding mounting kits)	
Service Ports	2 10/100/1000Base-T Ethernet ports, PoE/LAN1 port supports PoE	2 10/100 Base-T Ethernet ports, PoE/LAN1 port supports PoE	Front: 1 10/100Mbps Ethernet port Rear: 1 10/100Mbps PoE Ethernet port	2 10/100/1000Mbps Ethernet ports (one of which supports 802.3af/at)	
Management Port	NA	NA	NA	NA	
LED Indicator	Single indicator (green light)			Wi-Fi indicator, warning indicator, LAN1 connection indicator, LAN2 connection indicator	
Power Supply	Local power supply, DC 12V/1.5A (Note: The power adapter is sold as an optional accessory) 802.3af/802.3at	Local power supply, DC 12V/1.5A (Note: The power adapter is sold as an optional accessory) 802.3af/802.3at	802.3af	Local power supply, DC 12V/1.5A (Note: The power adapter is sold as an optional accessory) 802.3af/802.3at	
Power Consumption	≤ 12.95W	≤ 12.95W	< 8W	< 12.95W	
Coverage Radius				Open and unobstructed direction: 2.4G 100m, 5G 300m (the actual coverage distance may vary according to different obstruction situations and different performances of wireless terminals)	
Environment	IP Rating				IP68
	Operating temperature	0°C ~ 40°C			-30°C ~ 65°C
	Storage temperature	-40°C ~ 70°C			-40°C ~ 85°C
	Operating humidity	5% ~ 95% (non-condensing)			0% ~ 100% (non-condensing)
	Storage humidity	5% ~ 95% (non-condensing)			0% ~ 100% (non-condensing)
Installation	Wall-mount, ceiling-mount	Wall-mount, ceiling-mount	86mm wall plate installation	Outdoor	
Safety Standard	GB4943, IEC 60950-1				
EMC Standard	GB9254, EN301 489, EN50155: EN50121				
Vibration Standard	IEC61373				
Radio Standard	SRRC certification, EN300 328, EN301 893				
MTBF	>250000H				
Software Features					
WLAN	BSSID Capacity	8	8	8	8
	SSID hiding Configuring the authentication mode, encryption mechanism, and VLAN attributes for each SSID	Support	Support	Support	Support
	Radio-based STA limit	Support	Support	Support	Support
	Support Layer 2 user isolation	Support	Support	Support	Support
Roaming	Layer 3 roaming	Support	Support	Support	Support
Security	Static blacklist and whitelist	Support	Support	Support	Support
	WAP-PSK / WAP2-PSK WPA-WAP2-PSK	Support	Support	Support	Support
Routing	Static IP address, DHCP, PPPoE Dial Up static IP address, DHCP, PPPoE Dial Up	Support	Support	Support	Support
Management and maintenance	Self-organizing networking	Support	Support	Support	Support
	Ruijie Cloud management	Support	Support	Support	Support
	Web management	Support	Support	Support	Support

Cloud-managed Wireless Bridge

Description: Ruijie Reyee RG-EST310 is an 802.11ac wireless bridge for video surveillance backhaul or remote wireless transmission in scenarios such as elevators, tower cranes, factory buildings, campuses, and construction sites. Operating in the 5GHz band, RG-EST310 supports two spatial streams (2x2 MIMO technology) and provide up to 867 Mbps bridging rate, which can fully meet the data link bandwidth requirements of user services.

■ Zero Configuration

RG-EST310 consists 2 devices including the recorder-end and camera-end device. They are paired by default and can be used without requiring any configurations. It supports one-to-many expansion and it is recommended to support one to five at most.

■ Easy Installation

Straps are provided for easy equipment installation including wall/pole-mount, improving implementation efficiency.

■ High Reliability

RG-EST310 can provide dustproof and waterproof IP65 protection for outdoor environments and operate in a wide temperature range from -30°C to 50°C. The high-quality weather-resistant materials enable RG-EST310 to maintain excellent structural strength without embrittlement, yellowing, or deformation for long-term outdoor operation.


■ Convenient Maintenance

RG-EST310 supports Ruijie Cloud App management for the current connection latency, channel utilization, signal strength, rate, device connection, configuration modification, entire network upgrade and wireless bridge restart on the mobile phone. RG-EST310 also supports E-Web management.

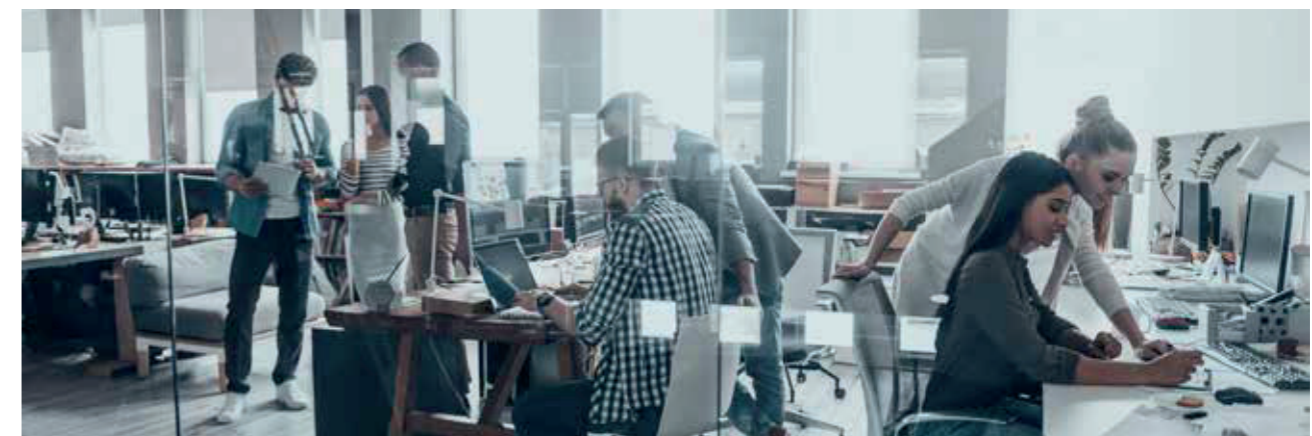


RG-EST310

Specifications

Product picture	
Model	RG-EST310
Hardware Specifications	
Chip	QCA9531, QCA9886
RAM/ Flash	64MB/8MB
Radio	Dual-stream single-band 2x2
Operating Band	5Ghz, 802.11a/n/ac
Antenna	Built-in directional antennas, horizontal: 60°, vertical: 30°, gain: 10dBi
Bridge distance	1KM
Spatial Streams	2
Maximum Throughput	Up to 867Mbps at 5GHz
Transmit Power	≤250mW
Dimensions	147mm(D)×76mm(W)×37mm(H) (Dimensions of each device, same size for the transmitter and receiver, H: height of the device excluding the mounting kits)
Weight	0.35kg
Ports	1 10/100Base-T Ethernet port, supports 24V Passive PoE 1 DC port, supports 12VDC power supply
Hardware Button	1 reset button
Status Indicators	System indicator: 1 Port indicator: 1 Bridge signal strength indicators: 3
Power Supply	Support 12VDC power supply and 24V non-standard PoE (default with PoE adapter)
Power Consumption	<5W
Environment	Operating temperature: -30°C ~ 50°C
	Storage temperature: -40°C ~ 70°C
	Operating humidity: 5% to 95% (non-condensing) Storage humidity: 5% to 95% (non-condensing)
Installation	Wall-mounted/ Pole-mounted (straps provided)
IP Rating	IP65 (Vertical ground installation)
Lightning Protection	4KV
Radio Standard	SRRC certification
Software Features	
Automatic Bridging	Support The recorder-end and camera-end are automatically paired for bridging by default
One-to-many bridging	Support up to one-to-five bridging for 60° horizontal wireless coverage
Device Configuration and Management	Support App/Web configuration
QR Code Login	Users can log in to the device configuration interface by scanning the QR code of the device using the app
Self-healing	Users can log in to the device configuration interface by scanning the QR code of the device using the app

05 Switches



Reyee Switch Solutions

Professional, Reliable and Affordable

Reyee switches are designed to offer reliable and professional choices to businesses of all sizes. Unmanaged switches are well suited for businesses requiring no management or monitoring of their LAN, smart/L2 switches provide a cost-effective solution for small and medium-sized businesses, and L3 managed switches provide a scalable and stable solution for large organizations, campus networks and ISP networks.

■ Ruijie Cloud App/ Ruijie Cloud Platform Remote Management

The Reyee managed switches are not only support web interface management, but also support life time free Ruijie Cloud App and Ruijie Cloud platform remote management. Users can view the network status, modify the configuration, and troubleshooting at home. In addition, the PoE port can be restarted remotely to restart the faulty PoE camera. With the mobile app, users can quickly complete the device deployment and configuration, remote management, operation and maintenance of the entire network, such as NVR/ Camera recognition, configure VLAN, real time monitoring, real time alarm, and reboot remotely , which greatly reduces the investment of equipment cost, labor cost and time cost in the process of wireless network construction.

■ Self-Organizing Networking Feature

Self-organizing networking feature, which breaks through the product limitations and realizes auto-discovery, auto-networking and auto-configuration between routers, switches, and wireless APs without the need for controllers or Internet access.

■ Full-Power PoE Supporting PoE Cameras at Maximum Capacity

Ruijie Reyee smart surveillance switches support full-power PoE output, powering PoE network cameras for all PoE ports simultaneously. Whether it is day or night, the infrared light of the camera is on or off, it can ensure that all PoE network cameras are powered.

■ 5 Years Warranty

For RG-NBS5200/5100/3200/3100 series, it supports 5 years free warranty.

L2+ 1G/10G Managed Switches

Ruijie RG-NBS5100 & 5200 series switches are high-performance, high-security, and multi-service next-generation Layer 3 Ethernet switches. The switch series adopt an efficient hardware architecture design to provide larger table size, faster hardware processing performance, and more convenient operating experience.

RG-NBS5100 series provides Gigabit access and Gigabit uplink. RG-NBS5200 series provides Gigabit access and 10G uplink ports. The RG-NBS5200 series offers 4 10G fiber ports, providing high-performance uplink capability.



RG-NBS5200-24SFP/8GT4XS
24-Port Gigabit SFP Managed Switch

24 SFP Slots, 8 Gigabit RJ45 Combo Ports, 4 10G SFP+ Slots,
19-inch Rack-mountable Steel Case, Static Routing



RG-NBS5200-48GT4XS
48-Port Gigabit Managed Switch

48 Gigabit RJ45 Ports, 4 10G SFP+ Slots,
19-inch Rack-mountable Steel Case, Static Routing



RG-NBS5200-24GT4XS
24-Port Gigabit Managed Switch

24 Gigabit RJ45 Ports, 4 10G SFP+ Slots,
19-inch Rack-mountable Steel Case, Static Routing



RG-NBS5100-48GT4SFP
48-Port Gigabit Managed Switch

48 Gigabit RJ45 Ports, 4 Gigabit SFP Ports,
19-inch Rack-mountable Steel Case, Static Routing



RG-NBS5100-24GT4SFP
24-Port Gigabit Managed Switch

24 Gigabit RJ45 Ports, 4 Gigabit SFP Ports,
19-inch Rack-mountable Steel Case, Static Routing

Energy Saving

The switches adopt the next-generation hardware architecture as well as advanced energy-saving circuit design and components to save energy for users while reducing noise pollution.

With Energy-Efficient Ethernet (EEE), the switch will automatically set the port to energy-saving mode according to different situations to achieve energy saving.

Surge Protection Ensuring Product Stability

The 6KV surge protection of the port reduces the probability of being damaged by surges and improves the customer's network stability.

Auto-networking Allowing One-step Project Management

The switches can obtain the IP address automatically from the router and connect to the external network without configuration. It also supports auto-networking for the switches. Users can scan the serial number of any switch in the network using the mobile app to automatically add all switches in the network to the project.

Mobile App/ Ruijie Cloud Platform Remote Management

The switches are not only supports web interface management, but also support mobile app and Ruijie Cloud platform remote management. Users can view the network status, modify the configuration, and troubleshoot at home.

Specifications

Specifications	RG-NBS5200-24GT4XS	RG-NBS5200-48GT4XS	RG-NBS5200-24SFP/8GT4XS	RG-NBS5100-24GT4SFP	RG-NBS5100-48GT4SFP
Fixed ports	24 10/100/1000Base-T ports, 4 SFP+ 10GBase-X ports	48 10/100/1000Base-T ports, 4 SFP+ 10GBase-X ports,	24 100/1000M SFP ports, 8 combo 10/100/1000Base-T ports, 4 SFP+ 10GBase-X ports,	24 10/100/1000Base-T ports, 4 SFP 1000Base-X ports,	48 10/100/1000Base-T ports, 4 SFP 1000Base-X
Switching capacity	336Gbps	336Gbps	336Gbps	336Gbps	336Gbps
Packet forwarding rate	108Mpps	144Mpps	108Mpps	51Mpps	87Mpps
MAC address	Support static MAC address, MAC address filtering				
MAC address table size	16K				
Number of VLANs	4094				
Layer 3 aggregation ports	16				
Link aggregation	Support				
Port mirroring	Many-to-one mirroring				
Spanning tree	STP, RSTP				
LLDP	Support				
IP routing	Static routing				
ACL	IP standard ACL MAC extended ACL IP extended ACL Port ACL for Layer 2 ports (physical port / AP)				
QoS	Port-based speed limit (ingress/egress)				
Security	Port protection Hardware CPP				
Management	Web management, Ruijie Cloud or mobile app management				
DHCP	DHCP snooping				
EEE	Support				
Physical specifications					
Dimensions (W x D x H)	440mm*207.5mm*43.6mm	440mm*267.5mm*43.6mm	440mm*267.5mm*43.6mm	440mm*207.5mm*43.6mm	440mm*267.5mm*43.6mm
Operating temperature	Operating temperature: 0°C ~ 50°C Storage temperature: -40°C ~ 70°C				
Operating humidity	Operating humidity: 10% ~ 90% RH Storage humidity: 5% ~ 90% RH				

L2 10G Managed Switches

Ruijie RG-NBS3200 Series Switches are the next-generation high-performance, high-security and multi-service Layer 2 Ethernet switches with gigabit and 10-Gigabit ports. Adopting an efficient hardware architecture design and equipped with Ruijie's OpenWRT operating system, this switch series provides larger MAC address table size, faster hardware processing performance, and more convenient operating experience.



RG-NBS3200-24GT4XS
24-Port Gigabit Managed Switch

24 Gigabit RJ45 Ports, 4 10G SFP+ Slots,
19-inch Rack-mountable Steel Case



RG-NBS3200-24SFP/8GT4XS
24-Port Gigabit SFP Managed Switch

24 SFP Slots, 8 Gigabit RJ45 Ports, 4 10G SFP+ Slots,
19-inch Rack-mountable Steel Case



RG-NBS3200-24GT4XS-P
24-Port Gigabit PoE+ Managed Switch

24 Gigabit RJ45 Ports, 4 10G SFP+ Slots, 370W PoE Power,
19-inch Rack-mountable Steel Case



RG-NBS3200-48GT4XS
48-Port Gigabit Managed Switch

48 Gigabit RJ45 Ports, 4 10G SFP+ Slots,
19-inch Rack-mountable Steel Case



RG-NBS3200-48GT4XS-P
48-Port Gigabit PoE+ Managed Switch

48 Gigabit RJ45 Ports, 4 10G SFP+ Slots, 370W PoE Power,
19-inch Rack-mountable Steel Case

Energy Saving

The switches adopt the next-generation hardware architecture as well as advanced energy-saving circuit design and components to save energy for users while reducing noise pollution.

With Energy-Efficient Ethernet (EEE), if the port of RG-NBS3200 is idle for a continuous period of time, the system will set the port to energy-saving mode. When there is a need of packet transmission, RG-NBS3200 will wake up the port to resume service via signals sent on regular intervals to achieve energy saving.

Flexible VLAN Division

Reyee managed switches provide a convenient and flexible way to divide VLANs, allowing you to divide ports into different VLANs according to your needs. Users in different VLANs do not affect each other, creating a more stable network for the users.

Auto-networking Allowing One-step Project Management

The switches can obtain the IP address automatically from the router and connect to the external network without configuration. It also supports auto-networking for the switches. Users can scan the serial number of any switch in the network using the mobile app to automatically add all switches in the network to the project.

Surge Protection Ensuring Product Stability

The 6KV surge protection of the port reduces the probability of being damaged by surges and improves the customer's network stability.

Mobile App/ Ruijie Cloud platform Remote Management

The switches not only supports web interface management, but also supports mobile app and Ruijie Cloud platform remote management. Users can view the network status, modify the configuration, and troubleshoot at home.

Specifications

Specifications	RG-NBS3200-24GT4XS	RG-NBS3200-48GT4XS	RG-NBS3200-24SFP/8GT4XS	RG-NBS3200-24GT4XS-P	RG-NBS3200-48GT4XS-P
Fixed ports	24 10/100/1000Base-T ports, 4 SFP+ 10GBase-X ports,	48 10/100/1000Base-T ports, 4 SFP+ 10GBase-X ports,	24 100/1000M SFP ports, 8 combo 10/100/1000Base-T ports, 4 SFP+ 10GBase-X ports	24 10/100/1000Base-T ports (support PoE and PoE+), 4 SFP+ 10GBase-X ports	48 10/100/1000Base-T ports (support PoE and PoE+), 4 SFP+ 10GBase-X ports
Switching capacity	336Gbps	336Gbps	336Gbps	336Gbps	336Gbps
Packet forwarding rate	96Mpps	132Mpps	96Mpps	96Mpps	132Mpps
MAC address	Support static MAC address, MAC address filtering				
MAC address table size	16K				
Number of VLANs	4094				
Layer 3 aggregation ports	16				
Link aggregation	Support				
Port mirroring	Many-to-one mirroring				
Spanning tree	STP, RSTP				
LLDP	Support				
IP routing	N/A				
ACL	IP standard ACL MAC extended ACL IP extended ACL Port ACL for Layer 2 ports (physical port / AP)				
QoS	Port-based speed limit (ingress/egress)				
Security	Port protection Hardware CPP				
Management	Web management, Ruijie Cloud or mobile app management				
DHCP	DHCP snooping				
EEE	Support				
Physical specifications					
Dimensions (W x D x H)	440mm*207.5mm*43.6mm	440mm*267.5mm*43.6mm	440mm*207.5mm*43.6mm	440mm*207.5mm*43.6mm	440mm*357.6mm*43.6mm
PoE	N/A			24/48 Base-T ports (support PoE and PoE+) Maximum PoE / PoE+ output power per switch: 370W Maximum output power per port: 30W	
Operating temperature	Operating temperature: 0°C ~ 50°C Storage temperature: -40°C ~ 70°C				
Operating humidity	Operating humidity: 10% ~ 90% RH Storage humidity: 5% ~ 90% RH				

L2 Gigabit Managed Switches

Ruijie Reyee RG-NBS3100 Managed Switch Series consists 4 models of switches designed for SME customers to meet their different network needs including basic VLAN division and advanced security features such as ACL. The models with suffix -P support PoE, which can meet the PoE requirements of wireless APs, digital cameras and other devices in various scenarios.



RG-NBS3100-24GT4SFP
24-Port Gigabit Managed Switch

24 Gigabit RJ45 Ports, 4 SFP Slots,
19-inch Rack-mountable Steel Case



RG-NBS3100-8GT2SFP
8-Port Gigabit Managed Desktop Switch

8 Gigabit RJ45 Ports, 2 SFP Slots, Desktop Steel Case



RG-NBS3100-24GT4SFP-P
24-Port Gigabit PoE+ Managed Switch

24 Gigabit RJ45 Ports, 4 SFP Slots, 370W PoE Power,
19-inch Rack-mountable Steel Case



RG-NBS3100-8GT2SFP-P
8-Port Gigabit PoE+ Managed Desktop Switch

8 Gigabit RJ45 Ports, 2 SFP Slots, 125W PoE Power,
Desktop Steel Case

Flexible VLAN Division

Reyee managed switches provide a convenient and flexible way to divide VLANs, allowing you to divide ports into different VLANs according to your needs. Users in different VLANs do not affect each other, creating a more stable network for the users.

Auto-networking Allowing One-step Project Management

The switches can obtain the IP address automatically from the router and connect to the external network without configuration. It also supports auto-networking for the switches. Users can scan the serial number of any switch in the network using the mobile app to automatically add all switches in the network to the project.

Surge Protection Ensuring Product Stability

The 6KV surge protection of the port reduces the probability of being damaged by surges and improves the customer's network stability.

Mobile App/ Ruijie Cloud platform Remote Management

The switches not only supports web interface management, but also supports mobile app and Ruijie Cloud platform remote management. Users can view the network status, modify the configuration, and troubleshoot at home.

Specifications

Specifications	RG-NBS3100-24GT4SFP	RG-NBS3100-8GT2SFP	RG-NBS3100-24GT4SFP-P	RG-NBS3100-8GT2SFP-P
Fixed ports	24 10/100/1000Base-T ports, 4 SFP 1000Base-X ports	8 10/100/1000Base-T ports, 2 SFP 1000Base-X ports	24 10/100/1000Base-T ports (support PoE and PoE+), 4 SFP 1000Base-X ports, 370W PoE power	8 10/100/1000Base-T ports (support PoE and PoE+), 2 SFP 1000Base-X ports, 125W PoE power
Switching capacity	336Gbps	192Gbps	336Gbps	192Gbps
Packet forwarding rate	42Mpps	15Mpps	42Mpps	15Mpps
MAC address	Support static MAC address, MAC address filtering			
MAC address table size	8K			
Number of VLANs	4094			
Link aggregation	Support			
Port mirroring	Many-to-one mirroring			
Spanning tree	STP, RSTP			
LLDP	Support			
IP routing	N/A			
ACL	IP standard ACL MAC extended ACL IP extended ACL Port ACL for Layer 2 ports (physical port / AP)			
QoS	Port-based speed limit (ingress/egress)			
Security	Port protection Hardware CPP			
Management	Web management, Ruijie Cloud or mobile app management			
DHCP	DHCP snooping			
EEE	Support			
Physical specifications				
Dimensions (W x D x H)	440mm*165mm*44mm	260mm*120mm*43.6mm	440mm*293mm*44mm	300mm*220mm*43.6mm
PoE	N/A	N/A	4 Base-T ports (support PoE and PoE+) Maximum PoE / PoE+ output power per switch: 370W Maximum output power per port: 30W	8 Base-T ports (support PoE and PoE+) Maximum PoE / PoE+ output power per switch: 125W Maximum output power per port: 30W
Operating temperature	Operating temperature: 0°C ~ 50°C Storage temperature: -40°C ~ 70°C			
Operating humidity	Operating humidity: 10% ~ 90% RH Storage humidity: 5% ~ 90% RH			

Cloud Switches for IP Surveillance

Ruijie Reyee ES200 series PoE switches is a series of cloud managed switches launched by Ruijie to solve the pain points of the current video surveillance industry. Ruijie Reyee Cloud managed switches offer a variety of port options to meet the needs of IP surveillance networks of different scales.

Ruijie Reyee ES200 Series cloud managed switches provide simple and easy-to-use management features while offering plug and play with default factory configuration, which can quickly locate the surveillance network faults, initiate PoE port restart, perform VLAN configuration, etc. Mobile app and Ruijie Cloud remote management is also supported, making the operation and maintenance of the surveillance network easier and more convenient, while reducing operation and maintenance costs.



RG-ES205GC-P

5-Port Gigabit PoE+ Cloud managed Switch

5 Gigabit RJ45 Ports including 4 PoE Ports, 54W PoE Power, Desktop Steel Case



RG-ES209GC-P

9-Port Gigabit PoE+ Cloud managed Switch

9 Gigabit Ports including 8 PoE ports, 120W PoE Power, Desktop Steel Case



RG-ES218GC-P

16-Port Gigabit PoE+ Cloud managed Switch

16 Gigabit RJ45 Ports, 2 SFP slot, 240W PoE Power, 13-inch Rack-mountable Steel Case



RG-ES226GC-P

24-Port Gigabit PoE+ Cloud managed Switch

24 Gigabit RJ45 Ports, 2 SFP slot, 370W PoE Power, 13-inch Rack-mountable Steel Case

Plug and Play with Zero Configuration

Under factory default state, the smart surveillance switches require zero configuration after plugged in. The video surveillance network can be set up quickly after connecting the devices correctly.

Auto PoE Power Adjustment for Safety and Energy Saving

The PoE ports support 802.3af and 802.3at, providing sufficient power to the connected device. The switches will negotiate with the connected devices to automatically adjust the PoE power, thereby saving energy.

When the PoE port is connected to non-PoE device, the switch will not output power to such device to ensure equipment safety.

Full-Power PoE supporting PoE Cameras at Maximum Capacity

The smart surveillance switches support full-power PoE output, powering PoE network cameras for all PoE ports simultaneously. It can ensure that all PoE network cameras are powered 24 hours a day.

the customer's network stability.

Fast Fault Positioning

The smart surveillance switches support monitoring the network status in real time. When failure occurs, the location and cause of failure can be displayed in a timely manner, and the notification can be sent via the mobile app.

On-Demand VLAN configuration

The PoE ports support 802.3af and 802.3at, providing sufficient power to the connected device. The switches will negotiate with the connected devices to automatically adjust the PoE power, thereby saving energy.

When the PoE port is connected to non-PoE device, the switch will not output power to such device to ensure equipment safety.

Multiple Deployment Methods Allowing One-step Project Management

The switches can obtain the IP address automatically from the router and connect to the external network without configuration. It also supports auto-networking for the switches. Users can scan the serial number of any switch in the network using the mobile app to automatically add all switches in the network to the project.

High Compatibility for Network Cable

The smart surveillance switches not only support standard network cables, but also support power supply and data transmission via network cables of non-standard materials, facilitating the construction and cabling.

Mobile App/ Ruijie Cloud Platform Remote Management

The switches not only supports web interface management, but also supports mobile app and Ruijie Cloud platform remote management. Users can view the network status, modify the configuration, and troubleshoot at home.

Specifications

Model	RG-ES205GC-P	RG-ES209GC-P	RG-ES218GC-P	RG-ES226GC-P
Hardware specifications				
Ports	4 10/100/1000 Base-T ports (PoE/PoE+), 1 10/100/1000 Base-T port	8 10/100/1000 Base-T ports (PoE/PoE+), 1 10/100/1000 Base-T port	16 10/100/1000 Base-T ports (PoE/PoE+), 2 SFP Base-X ports	24 10/100/1000 Base-T ports (PoE/PoE+), 2 SFP Base-X ports
Maximum output power per PoE port	30W	30W	30W	30W
Maximum PoE output power per switch	54W	120W	240W	370W
Switching capacity	10Gbps	18Gbps	36Gbps	52Gbps
Packet forwarding rate	7.44Mpps	13.392Mpps	26.784Mpps	38.688Mpps
Surge protection	Common mode: 4KV	Common mode: 4KV	Common mode: 4KV	Common mode: 4KV
Electrostatic discharge	Air discharge: 6KV Contact discharge: 4KV	Air discharge: 6KV Contact discharge: 4KV	Air discharge: 6KV Contact discharge: 4KV	Air discharge: 6KV Contact discharge: 4KV
Power consumption	≤60W	≤130W	≤280W	≤400W
Power supply	External power adapter	External power adapter	Built-in power supply	Built-in power supply
Dimensions (W x D x H)	148mm*78mm*26mm	202mm*108mm*28mm	300mm*230mm*43.6mm	440mm*289mm*43.6mm
MTBF (Hours)	>200K	>200K	>200K	>200K
Operating environment				
Operating temperature	0 to 40°C	0 to 40°C	0 to 40°C	0 to 40°C
Storage temperature	-40~70°C	-40~70°C	-40~70°C	-40~70°C
Operating humidity	10% to 90% RH	10% to 90% RH	10% to 90% RH	10% to 90% RH
Storage humidity	5% to 95% RH	5% to 95% RH	5% to 95% RH	5% to 95% RH
Software features				
MAC capacity	4K	8K	8K	8K
Static MAC address	16	16	16	16
VLAN	Support 802.1Q VLAN			
Port management	Support port status display, port traffic statistics, PoE port output power status, port duplex / negotiation rate configuration, flow control configuration, PoE output on/off			
Security	Support broadcast storm suppression, port speed limit, port isolation			
L2 features	Support port mirroring, loop protection, cable detection			
Management	Support management and configuration through web management interface, Ruijie Cloud platform and mobile app			

Cloud Managed Switches for IP Surveillance

In addition to the Ruijie Reyee Cloud managed PoE switches, this series offers a 16-port and a 24-port non-PoE Gigabit switch to meet the customers' needs for cloud management in non-PoE circumstances, such as PC, printer, and non-PoE cameras.



RG-ES224GC
24-Port Gigabit Cloud managed Switch

24-Port Gigabit Smart Switch, 24 Gigabit RJ45 Ports, 19-inch Rack-mountable Steel Case



RG-ES216GC
16-Port Gigabit Cloud managed Switch

16-Port Gigabit Smart Switch, 16 Gigabit RJ45 Ports, 19-inch Rack-mountable Steel Case

Plug and Play with Zero Configuration

Under factory default state, the smart surveillance switches require zero configuration after plugged in. The video surveillance network can be set up quickly after connecting the devices correctly.

On-Demand VLAN Configuration

The smart surveillance switches provide convenient and flexible VLAN division, so that the surveillance network and data network do not interfere with each other, improving the stability of the entire network.

High Compatibility for Network Cable

The smart surveillance switches not only support standard network cables, but also support power supply and data transmission via network cables of non-standard materials, facilitating the construction and cabling.

Fast Fault Positioning

The smart surveillance switches support monitoring the network status in real time. When failure occurs, the location and cause of failure can be displayed in a timely manner, and the notification can be sent via the mobile app.

Mobile App/ Ruijie Cloud Platform Remote Management

The switches not only supports web interface management, but also supports mobile app and Ruijie Cloud platform remote management. Users can view the network status, modify the configuration, and troubleshoot at home.

Multiple Deployment Methods Allowing One-Step Project Management

The switches can obtain the IP address automatically from the router and connect to the external network without configuration. It also supports auto-networking for the switches. Users can scan the serial number of any switch in the network using the mobile app to automatically add all switches in the network to the project.

Specifications

Model Specifications	RG-ES216GC	RG-ES224GC
Hardware specifications		
Ports	16 10/100/1000Base-T ports	24 10/100/1000Base-T ports
Switching capacity	32Gbps	48Gbps
Packet forwarding rate	24Mpps	36Mpps
Surge protection	Common mode: 6KV	Common mode: 6KV
Power consumption	<12W	<14W
Power supply	Built-in power supply	Built-in power supply
Dimensions (W x D x H)	440mm*165mm*44mm	440mm*165mm*44mm
MTBF (Hours)	>200K	>200K
Operating environment		
Operating temperature	0 to 50°C	0 to 50°C
Storage temperature	-40~70°C	-40~70°C
Operating humidity	10% to 90% RH	10% to 90% RH
Storage humidity	5% to 95% RH	5% to 95% RH
Software features		
MAC capacity	8K	8K
Static MAC address	16	16
VLAN	Support 802.1Q VLAN	
Port management	Support port status display, port traffic statistics, port duplex / negotiation rate configuration, flow control configuration	
Security	Support broadcast storm suppression, port speed limit, port isolation, DHCP Snooping	
L2 features	Support port mirroring, loop protection, cable detection	
Management	Support management and configuration through web management interface, Ruijie Cloud platform and mobile app	

Unmanaged Switches

Ruijie Reyee RG-ES105D/ RG-ES108D/ RG-ES105GD/ RG-ES108GD are cost-effective unmanaged access switches with metal casing designed for SMEs. The RG-ES100 Series supports plug-and-play without requiring any configuration, which can meet the requirements of various scenarios such as wired, wireless and surveillance networks.



RG-ES105D
5-Port Gigabit unmanaged Switch

5 10/100base-t Ethernet RJ45 Ports, Steel Case



RG-ES108D
8-Port Gigabit unmanaged Switch

8 10/100base-t Ethernet RJ45 Ports, Steel Case



RG-ES105GD
5-Port Gigabit unmanaged Switch

5 Gigabit RJ45 Ports, Steel Case



RG-ES108GD
5-Port Gigabit unmanaged Switch

5 Gigabit RJ45 Ports, Steel Case

Plug and Play

RG-ES100 Series supports self-adaptive ports and plug-and-play feature with zero configuration.

Enterprise-Grade Quality

The high-quality 8-core network cable and enterprise-grade components ensure no packet loss or lagging for data transmission.

Easy to Install

The compact size allows easy installation in the ELV box at home or the waterproof surveillance junction box, as it only takes up little space.

Metal Casing

The entire casing is made of metal which provides better heat dissipation.

RG-ES05G/RG-ES08G are desktop switches tailored for small enterprises, small-scale surveillance and SOHO



RG-ES05G
5-Port Gigabit unmanaged Switch

5 10/100base-t Ethernet RJ45 Ports, Plastic Case



RG-ES08G
8-Port Gigabit unmanaged Switch

8 10/100base-t Ethernet RJ45 Ports, Plastic Case

Specifications

Model	ES105D	ES108D	ES105GD	ES108GD
Ports	5 10/100Mbps RJ45 ports	8 10/100Mbps RJ45 ports	5 10/100/1000Mbps RJ45 ports	8 10/100/1000Mbps RJ45 ports
Maximum port forwarding rate	100Mbps	100Mbps	1000Mbps	1000Mbps
Auto-MDI/MDIX	Support	Support	Support	Support
MAC address	1K	2K	2K	8K
Backplane bandwidth	1Gbps	1.6Gbps	10Gbps	16Gbps
Maximum packet forwarding rate	744Kpps	1.19Mpps	7.44Mpps	11.9Mpps
LED indicator	Link/Act status LED indicator for each port, Power indicator	Link/Act status LED indicator for each port, Power indicator	Link/Act status LED indicator for each port, Power indicator	Link/Act status LED indicator for each port, Power indicator
Dimensions (W x D x H)	119mm*62mm*24mm	160mm*75mm*24mm	119mm*62mm*24mm	160mm*75mm*24mm
Power input / output	External 5VDC 1.0A	External 5VDC 1.0A	External 5VDC 1.0A	External 5VDC 1.0A
Maximum power consumption	≤5W	≤5W	≤5W	≤5W
Temperature	Operating temperature: 0 °C ~ 40 °C Storage temperature: -40 °C ~ 70 °C	Operating temperature: 0 °C ~ 40 °C Storage temperature: -40 °C ~ 70 °C	Operating temperature: 0 °C ~ 40 °C Storage temperature: -40 °C ~ 70 °C	Operating temperature: 0 °C ~ 40 °C Storage temperature: -40 °C ~ 70 °C
Humidity	Operating humidity: 10% ~ 90% non-condensing Storage humidity: 5% ~ 90% non-condensing	Operating humidity: 10% ~ 90% non-condensing Storage humidity: 5% ~ 90% non-condensing	Operating humidity: 10% ~ 90% non-condensing Storage humidity: 5% ~ 90% non-condensing	Operating humidity: 10% ~ 90% non-condensing Storage humidity: 5% ~ 90% non-condensing

Model	RG-ES05G	RG-ES08G
Ports	5 10/100/1000M Base-T ports	8 10/100/1000M Base-T ports
Operating mode	Half-duplex, full-duplex, auto-negotiation mode Support auto MDI/MDIX	
Backplane bandwidth	16Gbps	16Gbps
Packet forwarding rate	10Mbps:14880pps 100Mbps:148800pps 1000Mbps:1488000pps	10Mbps:14880pps 100Mbps:148800pps 1000Mbps:1488000pps
MAC address	2K	8K
Power supply	External, DC 5.0V / 600mA	External, DC 9.0V / 600mA
Maximum power consumption	≤2.5W	≤2.5W
Fan	Fanless	Fanless
Dimensions (W x D x H)	108.1mm*64mm*24.8mm	144mm*85mm*23mm
Temperature	Operating temperature: 0 °C ~ 40 °C Storage temperature: -40 °C ~ 70 °C	
Humidity	Operating humidity: 10% ~ 90% RH Storage humidity: 5% ~ 95% RH	

06 Router



EasyGate Series

Ruijie Reyee RG-EG series Router is a cloud managed router designed for villas and smart home , restaurant, small offices, homestay hotel . it is affordable, small and easy to use, but at the same time comes with 500M-600M bandwidth and supporting up to 200 terminals.

RG-EG series can perform per-port VLAN configuration to achieve port isolation, and integrate with smart flow control to achieve comprehensive network planning and perform local and remote network diagnosis.

- **Auto-provisioning via self-organizing network**

RG-EG series realizes the industry-leading auto-discovery and auto-networking features for routers, switches and wireless.

- **Multiple WAN Ports**

Up to 4 WAN ports are supported for RG-EG210GG-P. Up to 2 WAN are supported for RG-EG105G/RGG-EG105G-P.

- **AC mode**

Manage Reyee APs, saving cost.

- **IPSec VPN**

EG Provide VPN services for headquarters and branches, up to 8 branches.

- **Lifetime free Ruijie Cloud managed**

Remote fault alarm, one-click operation and maintenance on Ruijie Cloud App.

- **Full Gigabit port**

Meet the needs of 200M xDS/fiber access, high-speed wired connectivity.

- **Smart flow control**

Intelligently adjusted the each user bandwidth according to the access bandwidth and the number of users to ensure that each user can enjoy better network experience.

- **Enterprise Security features**

IP/MAC/MAC-Fitering. Independent VLAN for guest , isolated from the internal office network; Curved surface metal design, sheet metal stretching integrated molding.

Products



RG-EG105G
5-Port Gigabit Cloud Managed Router



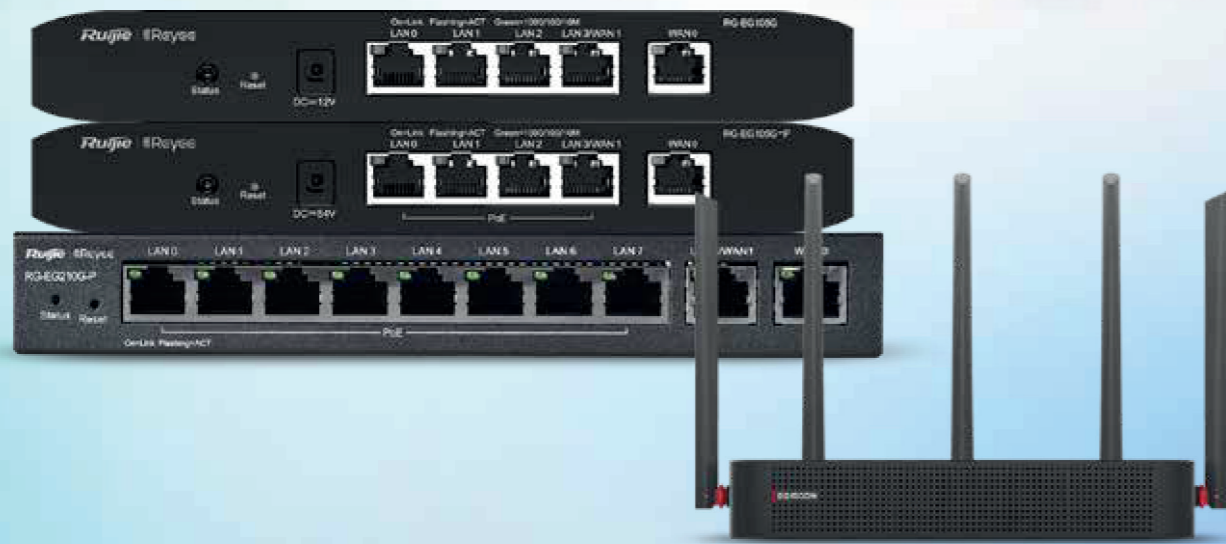
RG-EG105G-P
5-Port Gigabit Cloud Managed PoE Router



RG-EG210G-P
10-Port Gigabit Cloud Managed PoE Router



RG-EG105GW
5-Port Gigabit Cloud Managed Wireless Router



Specifications

Model	RG-EG105G	RG-EG105G-P	RG-EG105GW	RG-EG210G-P
Fixed ports	5 Gigabit ports, supporting up to 2 WAN ports			10 Gigabit ports, supporting up to 4 WAN ports
RAM	128MB			
Flash	16MB			
PoE	N/A	PoE output: 54W(802.3 af/at) Support up to 4 POE ports	N/A	PoE output: 70W (802.3 af/at) Support up to 8 POE ports
Wireless			Antenna 3 2.4G blade antennas (maximum gain 5dBi) 2 5.8G blade antennas (maximum gain 5dBi)	16Gbps
			Protocol 802.11a/n/ac Wave2	
			Spatial streams 5 spatial streams per router 3 spatial streams at 2.4GHz 2 spatial streams at 5GHz	
Maximum number of clients	Up to 100 concurrent clients			Up to 200 concurrent clients
Recommended bandwidth	500Mbps (flow control disabled), 300Mbps (flow control enabled) asymmetric bandwidth			
Local power supply	Support 220V AC local power supply			
Power consumption	<6W	<60W (With PoE load)	<20W	<80W
Dimensions	206.5×108.5×28 (mm)	206.5×108.5×28 (mm)	250×170×42 (mm)	202×107×28 (mm)
Weight	0.84kg	1.01kg	1.2kg	1.5kg
Temperature	Operating temperature: 0°C ~ 40°C Storage temperature: -10°C ~ 70°C			
Humidity	Operating humidity: 10% ~ 90% (non-condensing) Storage humidity: 5% ~ 95% (non-condensing)			
Basic network features				
Network access	PPPoE dial-up, DHCP client, static IP, automatic identification of access methods, automatic avoidance of WAN port address conflicts, MAC cloning, obtaining account passwords from existing routers			
Routing	Static routing, policy-based routing, carrier address routing, active/standby mode, load balancing based on source address, flow-based load balancing, port-based weighted load balancing of data streams			
Security	ACL, IP-MAC binding, MAC address filtering, dynamic ARP, static ARP binding, NAT, NAPT, port mapping			
Other protocols	DHCP Server, DHCP Client, DHCP Option43 / 138, DNS Client, DNS Server, DNS Proxy, TFTP, NTP, DDNS			
Gateway				
Flow control	Support custom flow control policies, IP-based automatic bandwidth assignment			
Traffic audit	Real-time traffic audit, IP traffic visualization			
Behavior management	Time-based and IP policy-based access control			
VPN	IPsec VPN (8 tunnels) server and client			
Wireless management				
Management capacity	In AC mode, the maximum management capacity is 300 In gateway mode, the maximum management capacity is 32		In AC mode, the maximum management capacity is 500 In gateway mode, the maximum management capacity is 150	
AP management	Support multi-SSID configuration, SSID hiding, channel setting, power setting, AP wired port setting, AP online upgrade, STA quantity setting, STA blacklist and whitelist			
Roaming	Support local forwarding roaming, Layer 2 roaming, Layer 3 roaming between APs, viewing of STA roaming track			
Switch management				
Management capacity	Maximum manageable cloud managed switches: 128			
Port management	Loop protection, port mirroring, port isolation, port configuration, PoE configuration, port limit, storm control, static MAC, MAC search			
Status display	Port statistics, monitoring information, cable detection, VLAN configuration, MAC list			
Upgrade management	Per-device upgrade, batch upgrade			
Value added features				
Featured solutions	Single-cable IPTV solution, port service VLAN and network segment isolation solution, smart fault diagnosis solution, intranet penetration solution, auto-networking solution			
Management	Eweb and Ruijie Cloud			



Ruijie Networks Co., Ltd.

Technical Support: <http://bbs.ruijiery.com>

Technical Service Center: +86-400-100-0078 (China)

Web: www.reyee.cc www.ruijiery.com